



Wave

GPW GOLDEN
PAINTWORKS.

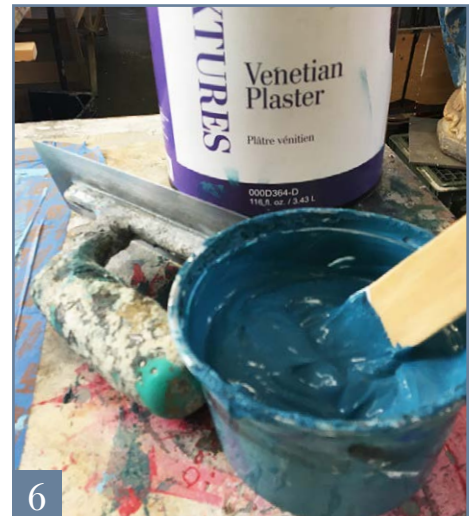
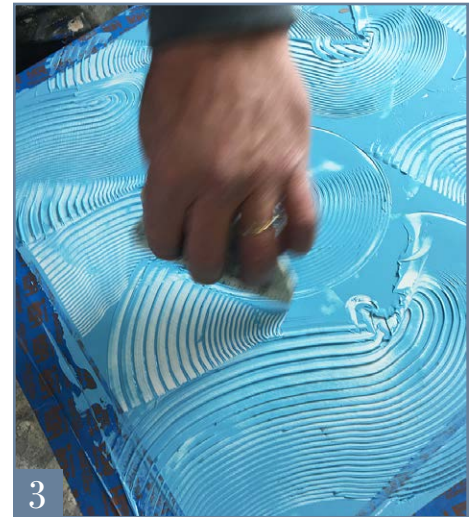
Arteriors | Limited Edition | Summer 2020

PRODUCTS

- Golden Paintworks Venetian Plaster tinted to Benjamin Moore Seaside Blue 2054-50
- Golden Paintworks Venetian Plaster tinted to Benjamin Moore Caribbean Blue Water 2055-30
- Golden Paintworks Glazing Gel
- Golden Paintworks Pre-Mixed Metallic Paint Reflection
- Primer

TOOLS

- Mixing Sticks and Containers
- 3" Paint Brush
- Trowels
- Woodgraining Rubber Comb
- Rags
- Dust Mask
- Sandpaper (220, 400, and 600 grit)

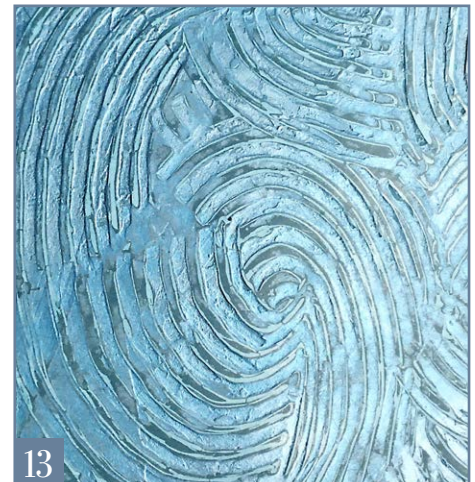


Introduction: Iridescent blue waves play with light and pattern in this finish made from decorative plasters and metallic paint. This is an advanced finish, but if you love a good challenge that yields beautiful results, give this a try! If you do not know how to trowel, watch the Golden Paintworks tutorials on application methods for Venetian Plaster on their website.

HOW TO:

- 1 | **PRIME** the surface and allow to dry completely. Mix Venetian Plaster to Benjamin Moore Seaside Blue 2054-50, or color of your choice. Venetian Plaster colors can be tinted by your local Golden Paintworks retailer, or simply by tinting your own to taste. Trowel the plaster in a relatively thick layer (*Photos 1 and 2*).
- 2 | **IN** up to 2' x 2' sections using a rubber wood graining comb, create a pattern by dragging the tool through the wet Venetian Plaster. Be creative and experiment on a separate board with wave shapes. Wipe excess plaster from the tool with a rag as you work. Move to the next section and repeat. Try to keep a wet edge between sections. Let dry (*Photos 3 and 4*).
- 3 | **WEARING** a dust mask, sand lightly with 220 grit sandpaper (*Photo 5*).
- 4 | **MIX** Venetian Plaster to Benjamin Moore Caribbean Blue Water 2055-30 or color of choice, and trowel over entire wave surface, filling in all the grooves left from the first combing layer. Scrape the surface with the edge of the trowel to keep the high points of the combed layer showing through the first layer. Let dry (*Photos 6 and 7*).

continued on next page →



- 5 | **WEARING** a dust mask sand lightly with 220 grit sandpaper (*Photo 8*).
- 6 | **MIX** two parts Glazing Gel with one part Pre-Mixed Metallic Paint Reflection (*Photo 9*). Paint over the entire surface with a brush (*Photo 10*). While paint is still wet, scrape the entire surface with the edge of the trowel, wiping it off with a damp rag occasionally, to expose high points of wave pattern (*Photo 11*). Let dry completely.
- 7 | **WEARING** a dust mask, sand the surface with 220 grit sandpaper to expose the pattern (*Photo 12*). If using a power tool, be gentle and do not sand too much at once or too fast. Using a sander with a vacuum attachment such as Festool Dust Extractor with a HEPA filter is the best kind of tool to use. Then sand lightly with 400 grit sand paper, then 600 to smooth and shine the high points. Burnish with a trowel. Wipe off surface. You are finished! Here is a close-up of the finalized texture (*Photo 13*).