

# URBAN CONCRETE



Studio By Shauna, Inc. | Limited Edition Collection | Spring / Summer 2021

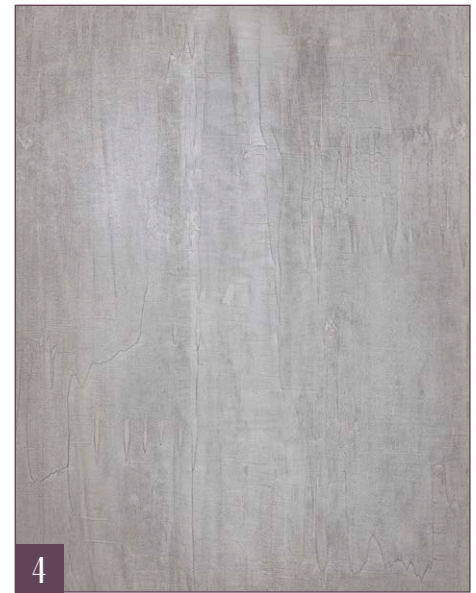
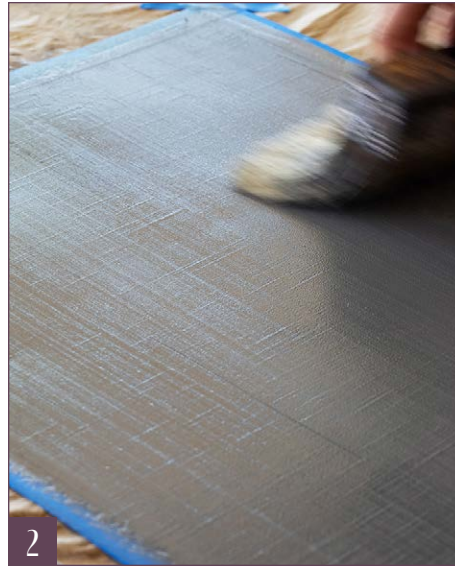
## PRODUCTS

- Golden Paintworks Sandstone (Untinted)
- Golden Paintworks Sandstone Purple Agate
- Golden Paintworks Slow Dry Fluid Acrylic in: Carbon Black, Van Dyke Brown Hue and Titanium White
- Golden Paintworks Soapstone
- Golden Paintworks Pre-Mixed Metallic Paint Bright Silver
- Golden Paintworks Glazing Medium

## TOOLS

- Trowel
- Blue Blade Spatulas or Japan Scrapers
- Sanding block
- Spray bottle with water and 10% Glazing Medium
- Large brush such as a stain brush, lime wash brush, or double thick 4" chip brush (*if using this option, tape two chip brushes together at the ferrule to create a larger brush*)
- Mini roller
- Towel





*Simulate the look of concrete on vertical surfaces with ease, and add polish with a silver glint in the overlay. Modern, organic looking, and industrial chic! This finish is fantastic on architectural features such as fireplaces.*

## HOW TO:

- 1 | **MIX** Sandstone (Untinted) and Sandstone Purple Agate at a ration of 3:1.
- 2 | **APPLY** Sandstone all over the surface with a trowel, finishing off the direction of the trowel marks vertically. Trowel this layer smoothly and evenly with minor texture (*Photo 1*). Allow to dry.
- 3 | **MIX** a glaze with Glazing Medium and Slow Dry Fluid Acrylic Van Dyke Brown, Slow Dry Fluid Acrylic Carbon Black and a little Slow Dry Fluid Acrylic Titanium White to create a warm mid-tone gray, about a 6 out of 10 in darkness on a gray scale.
- 4 | **SAND** the surface lightly to smooth texture and seal the pores of the Sandstone. Spray surface with the water/glaze mixture and even out with a large brush. Apply the gray glaze with a mini roller, finishing off the rolling pattern vertically to minimize pattern. Using a large brush, brush through the glaze vertically a couple of times, offloading the brush on the towel if it becomes loaded with glaze (*Photo 2*). Then brush through the glaze horizontally to negate any vertical patterning that may be in the glaze, and finish with a final softening of the glaze in the vertical direction. The result should be an even veil of gray color. Allow to dry.
- 5 | **CREATE** a mixture of Soapstone and Pre-Mixed Metallic Paint Bright Silver, using a ration of 3:1. Tone the mixture slightly by adding about 5-10% of the above gray glaze mixture. Add an additional 5% Glazing Medium. Using a blue blade spatula or Japan scraper, apply the mixture to the wall and scrape off in vertical movement, leaving a slight haze on the surface (*Photo 3*). Allow to dry. Here is the completed finish (*Photo 4*).

**Note:** *The metallic in this finish is subtle and adds a designer appeal. For a more authentic concrete finish without the metallic sheen, omit Bright Silver in the Soapstone mix and add a small amount of white with the gray glaze instead.*

*Additionally, this finish is a deeper toned concrete. For a natural light concrete color, use Sandstone Untinted only, omitting the Purple Agate. All other steps remain the same.*